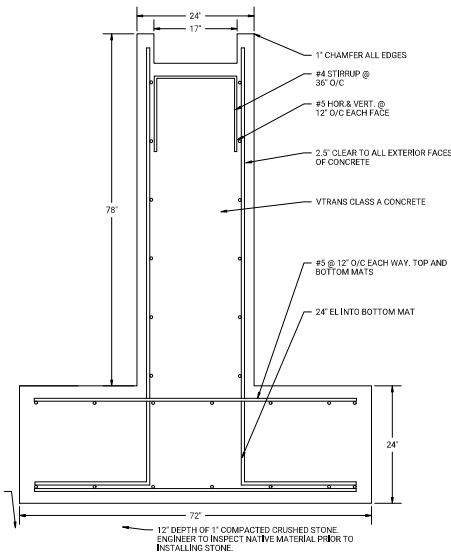
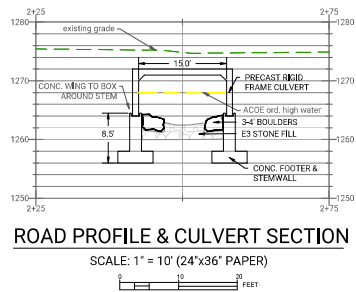


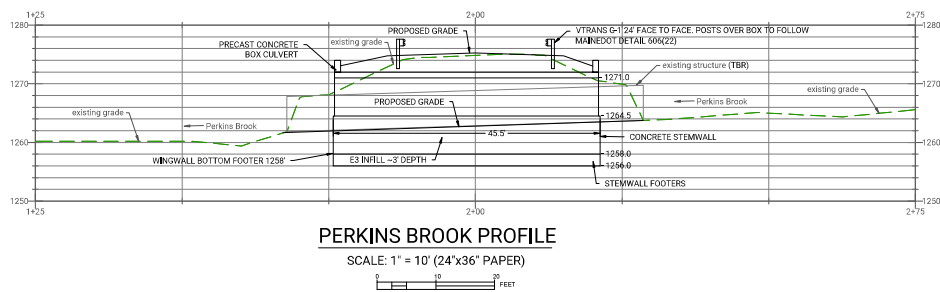
CULVERT/ROAD BACKFILL DETAIL
NOT TO SCALE



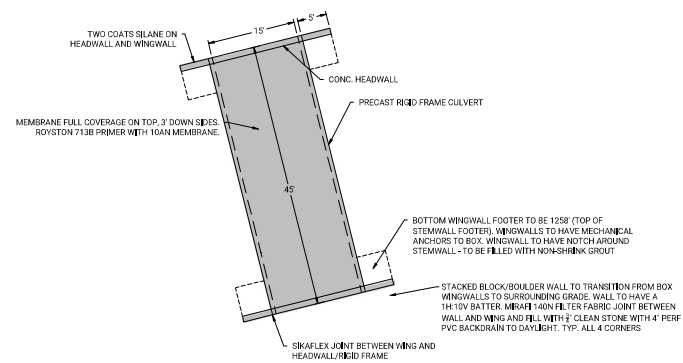
FOOTER-STEMWALL DIMENSIONS/DETAIL
SCALE: NTS



ROAD PROFILE & CULVERT SECTION
SCALE: 1" = 10' (24"x36" PAPER)



PERKINS BROOK PROFILE
SCALE: 1" = 10' (24"x36" PAPER)



CULVERT DIMENSIONS/DETAIL
SCALE: 1" = 10' (24"x36" PAPER)



#	BY:	DATE: